

A close-up portrait of a young man with a friendly smile, wearing a bright yellow hard hat and a high-visibility yellow safety vest over a dark shirt. He is holding a wooden plank over his shoulder. The background is a blurred construction site with wooden beams and warm lighting.

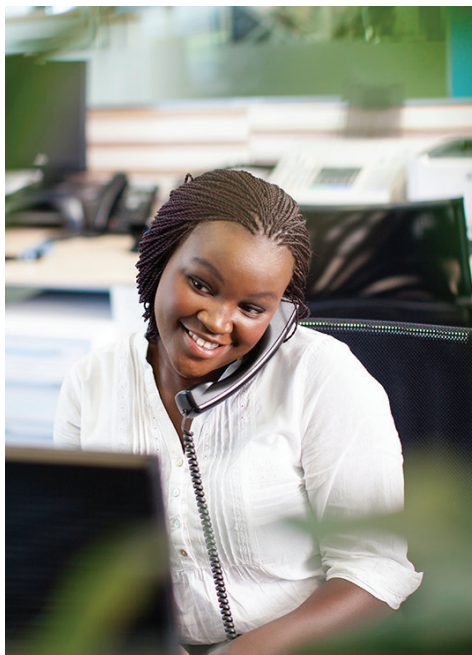
Ideas to Reach your **WorkPlace**



It's where we spend up to 38 hours each week but have you ever stopped to think about how you are sharing the love of Jesus in a practical way in your workplace? Are you even sharing it at all? In Matthew 5, Jesus calls us to be the Salt and Light and this includes our workplaces. So how can you intentionally build relationships and reach out to your workplace? Try some of these ideas and begin to change your workplace by sharing the love of Jesus in a real and practical way. You never know what impact you may have on a colleague just by simply serving and looking out for them.

- Offer to buy your colleagues a coffee or drink on your morning or afternoon break or make them one.
- Offer to buy your colleagues lunch or take their money and give it back as change....it really will brighten their day!
- Buy chocolate bars like Kit Kat's and give them out to some colleagues with a little note saying "Have a Break" on us!
- With the cost of petrol, offer to give your work mates a lift to work or begin a car pool...you will be surprised at the great chats you will have in the car.
- Write a note and leave on your colleague's desk or in their pigeon hole just letting them know how much you appreciate them or thanking them for the help they gave you with a certain project.





- Begin a service project bigger than your work place.... sponsor a child, collect nonperishable food and give to a food collection bank or raise money for a charity like ADRA.
 - If you are a boss or manager buy some Kit Kats or Time Outs or similar and give to your employees or team with a little note encouraging them to take 5 minutes out some time...you might be surprised at the improved work rate when they come back.
 - Just pick up the phone and dial one of your colleagues internal extensions and say "Hi"....randomly letting them know how much you enjoy working with them. Better still offer to pray for them (especially if you know they are going through a rough time
 - If you grow a vege garden and have more produce than you can use, take them into the office or staff room and offer to other staff. Always a good way to connect.
 - Do a water bottle outreach in your office with a connect card attached to the bottle.
 - Make morning tea for your work colleagues and send an e-mail around to them all letting them know it is in the kitchen. You might make scones, muffins or something else that is simple
 - Cook/Make lunch. Let everyone know not to bring lunch on a certain day and cook it for the staff (haystacks, nachos or salad roll (subway style) sandwiches or similar type of easy food is best. Sometimes it's a simple gesture that can have an eternal impact.
 - Prayer walk your office placing prayer cards on desks and under closed office doors just letting those who you work with know that you have and are praying for them and if they have any prayer requests to contact or come and see you and you will be more than happy to prayer for them.
- NOTE:** Be sure to include connect cards with any outreach event you may do, this should include the name, address and phone number of you or your church.



www.disciple.org.au

Written and produced by:

Pr. Greg Pratt
Personal Ministries Director
South Queensland Conference